

# 7.5' X 4.5' METER VAULT

NOT TO SCALE: ALL DIMENSIONS ARE SUBJECT TO ALLOWABLE SPECIFICATION TOLERANCES

## MATERIALS & FEATURES

CONCRETE: 5,000 PSI, 28 DAY STRENGTH.

REINFORCING: #4 BAR, 8" O.C.E.W. IN WALLS

TWO MATS #5 BAR, 8" O.C.E.W. IN TOP

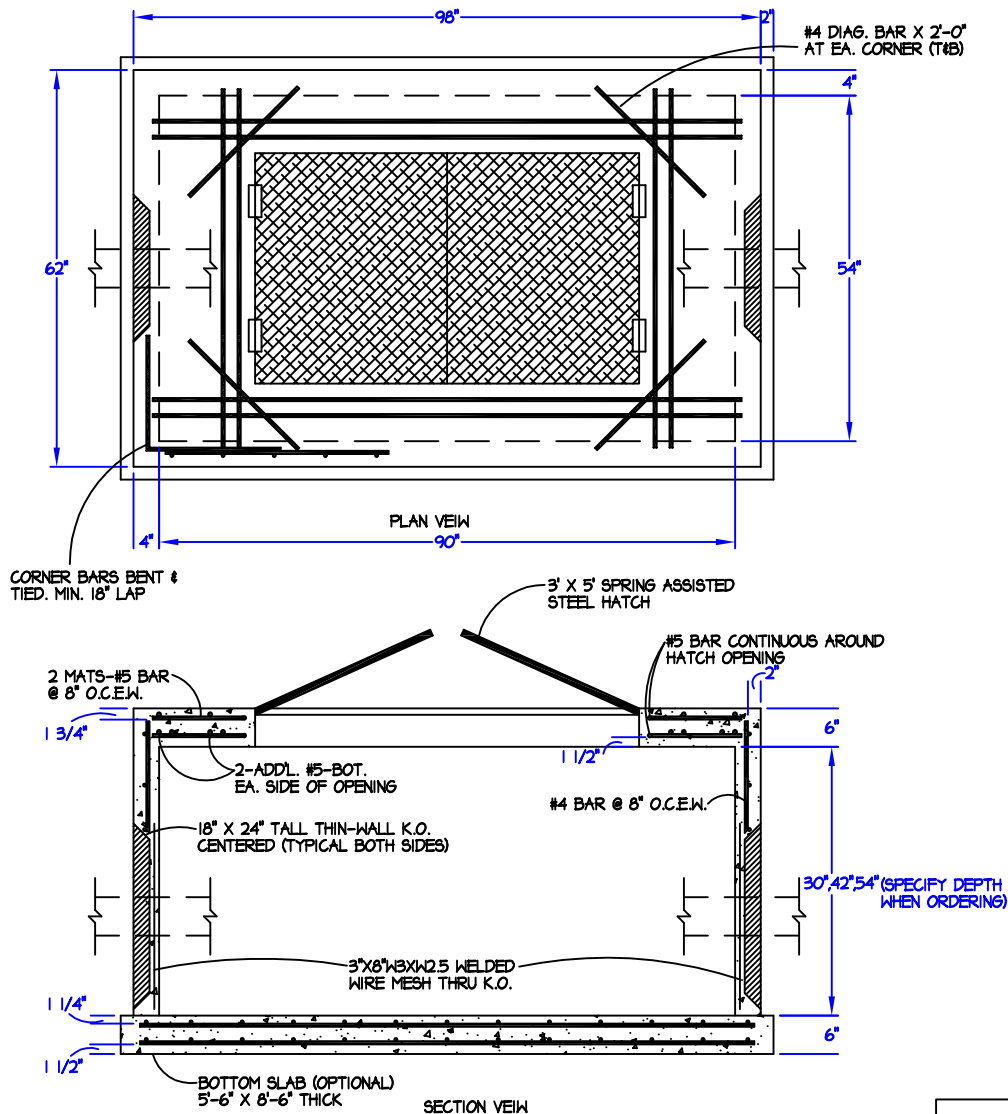
#5 BAR CONTINUOUS AROUND OPENING IN TOP

DOOR IN TOP: 36" X 60" STEEL ACCESS HATCH-CAST FLUSH - SPRING ASSISTED. OTHER ACCESS DOORS ARE AVAILABLE.

TYPICAL APPLICATIONS: CITY OF WACO BACKFLOW PREVENTER/ CITY OF DALLAS FM VAULT

TOP SLAB LOAD RATING = H-20.

EXCEEDS ASTM C858



**Capital Concrete Products**

5264 Hwy. 71 East • Del Valle, Texas 78617

TITLE:	7.5' X 4.5' METER VAULT
FILE NAME:	METER VAULT/7.5 X 4.5.DWG
DRAWN BY:	SUSAN MENTA
DATE:	AUGUST 20, 2009