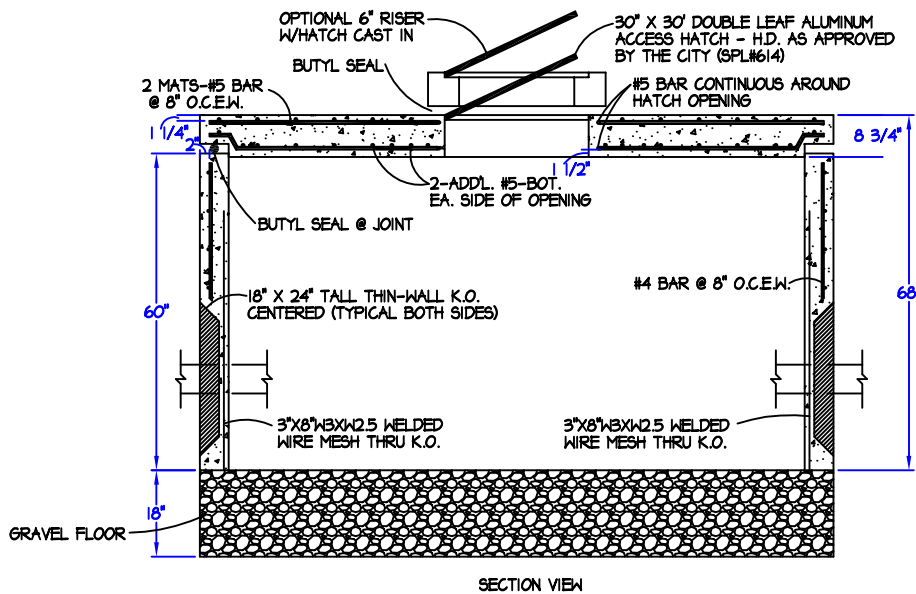
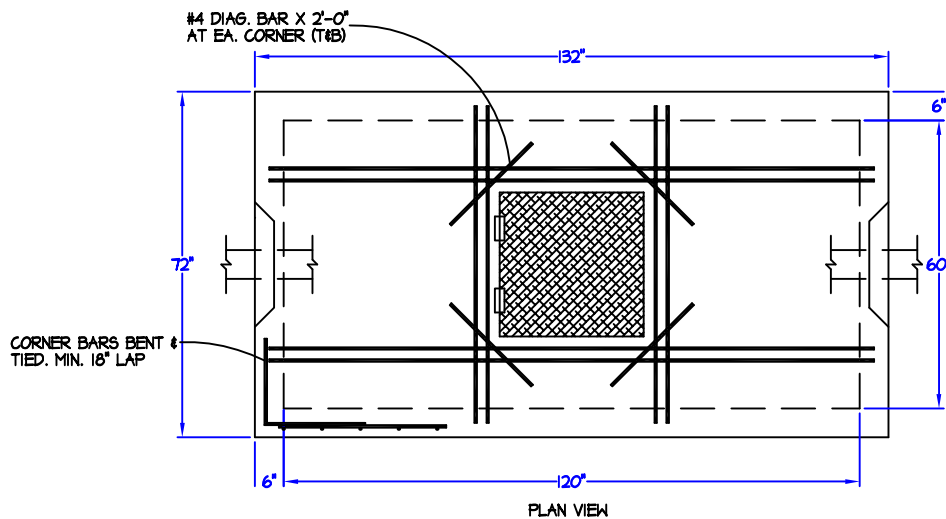


10' X 5' METER VAULT

NOT TO SCALE: ALL DIMENSIONS ARE SUBJECT TO ALLOWABLE SPECIFICATION TOLERANCES

MATERIALS & FEATURES

CONCRETE: 5,000 PSI, 28 DAY STRENGTH.
 REINFORCING: #4 BAR, 8" O.C.E.W. IN WALLS
 TWO MATS #5 BAR, 8" O.C.E.W. IN TOP
 #5 BAR CONTINUOUS AROUND OPENING IN TOP
 DOOR IN TOP: 30" X 30" ALUMINUM ACCESS HATCH TYPICAL APPLICATIONS: CITY OF AUSTIN COMPOUND METER - 10", BACKFLOW PREVENTER VAULT (SPL#298)
 TOP SLAB LOAD RATING = H-20.
 EXCEEDS ASTM C858



Capital Concrete Products

5264 Hwy. 71 East • Del Valle, Texas 78617

| | |
|------------|------------------------|
| TITLE: | 10' X 5' METER VAULT |
| FILE NAME: | METER VAULT/10 X 5.DWG |
| DRAWN BY: | SUSAN MENTA |
| DATE: | AUGUST 25, 2009 |