

96" I.D. MANHOLE - 10" STRAIGHT BASE

WITH FLATTOP & INVERT CHANNEL

NOT TO SCALE: ALL DIMENSIONS ARE SUBJECT TO ALLOWABLE SPECIFICATION TOLERANCES

MATERIALS & FEATURES

CONCRETE: 4,000 PSI, 28 DAY STRENGTH.
 REINFORCING: 3"x8" W3 x W25 WELDED WIRE IN ALL SURFACES & BOTTOM

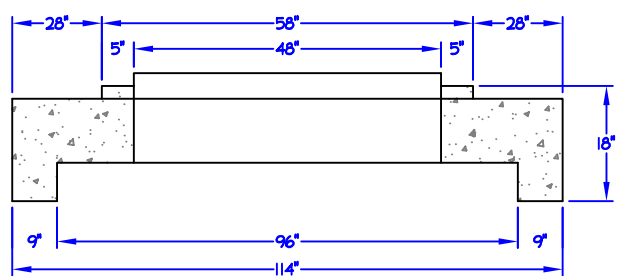
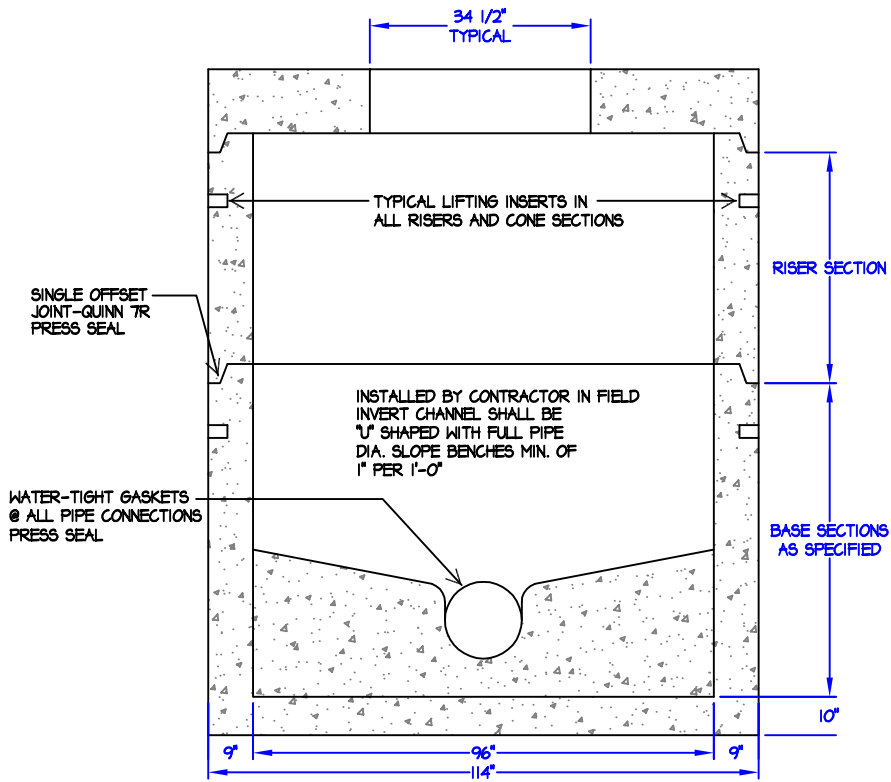
#4 BAR @90° CROSS IN BOTTOM & SIDES
 #4 BAR @ 12" ON CENTER EACH WAY IN BOTTOM (CONTINUOUS AROUND OPENINGS & SIDES)

AVERAGE WEIGHT OF 72" DEPTH BASE = 28,560 LBS

ESTIMATED WEIGHT OF RISER & FLAT
 TOP SECTIONS = 3,175 LBS / VERTICAL FOOT
 EXCEEDS ASTM C-478-03A

HOLES AS SPECIFIED
 WATER-TIGHT PRESS SEAL AT ALL PIPE CONNECTIONS
 FLAT TOP/ TRANSITION LOAD RATING = H20

RISER SECTIONS: 18", 24", 32", 36", 48", 60" AND 72"
 BASE SECTIONS AS SPECIFIED



TRANSITION PIECE
 96" TO 48"

MAXIMUM MANHOLE DEPTH 40 FEET BELOW SURFACE GRADE



Capital Concrete Products
 5264 Hwy. 71 East • Del Valle, Texas 78617

TITLE:	96" I.D. MANHOLE STRAIGHT 10" BASE - INV. CH.
FILE LOC.:	MANHOLES/ 96 ID MANHOLES
DRAWN BY:	SUSAN MENTA
DATE:	OCTOBER 12, 2009