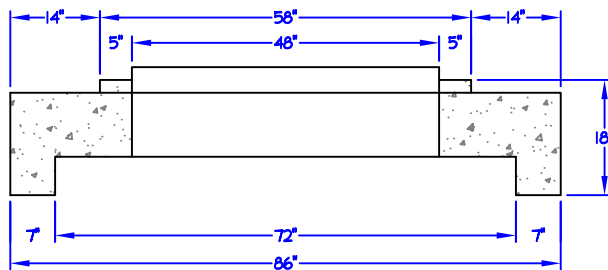
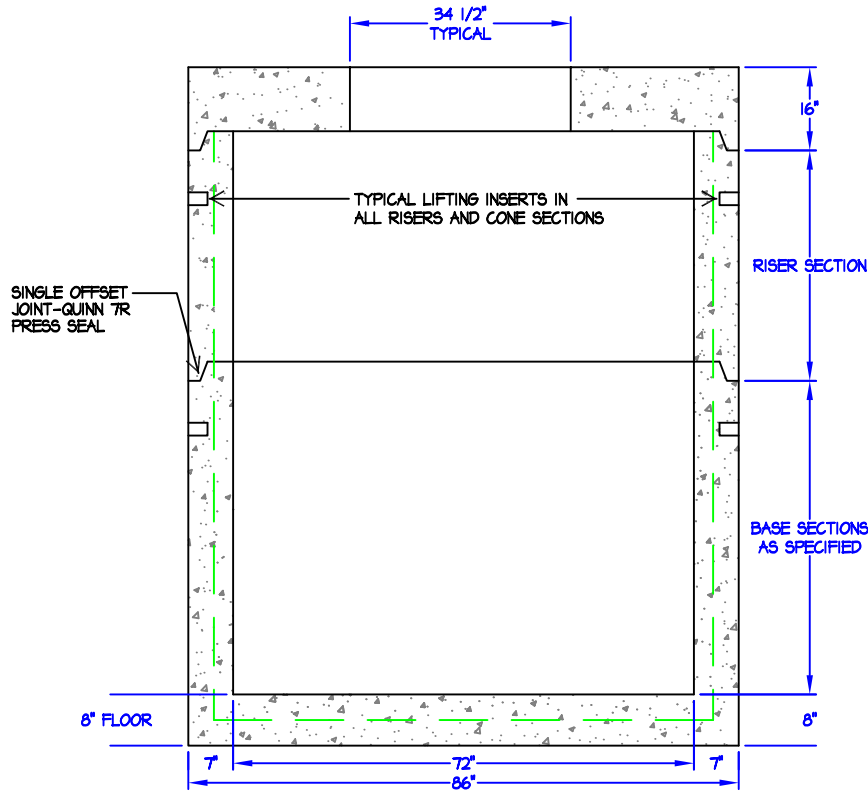


# 72" I.D. MANHOLE - 8" STRAIGHT BASE WITH FLATTOP

NOT TO SCALE: ALL DIMENSIONS ARE SUBJECT TO ALLOWABLE SPECIFICATION TOLERANCES

**MATERIALS & FEATURES**  
 CONCRETE: 4,000 PSI, 28 DAY STRENGTH.  
 REINFORCING: 3"x8" W3 x W25 WELDED WIRE IN ALL SURFACES & BOTTOM  
 #4 BAR @90° CROSS IN BOTTOM & SIDES  
 #4 BAR @ 12" ON CENTER EACH WAY IN BOTTOM (CONTINUOUS AROUND OPENINGS & SIDES)  
 AVERAGE WEIGHT OF 72" DEPTH BASE = 15,000 LBS  
 ESTIMATED WEIGHT OF RISER & FLAT  
 TOP SECTIONS = 1,500 LBS / VERTICAL FOOT  
 EXCEEDS ASTM C-478-03A  
 HOLES AS SPECIFIED - MAX. 32" Ø  
 FLAT TOP/ TRANSITION LOAD RATING = H20

RISER SECTIONS: 12", 18", 24", 32", 36", 48", 60" AND 72"  
 BASE SECTIONS AS SPECIFIED



**TRANSITION PIECE**  
72" TO 48"

MAXIMUM MANHOLE DEPTH 40 FEET BELOW SURFACE GRADE



**Capital Concrete Products**

5264 Hwy. 71 East • Del Valle, Texas 78617

TITLE:	72" I.D. MANHOLE STRAIGHT 8" BASE - NO CH.
FILE LOC.:	MANHOLES/ 72 ID MANHOLES
DRAWN BY:	SUSAN MENTA
DATE:	OCTOBER 09, 2009