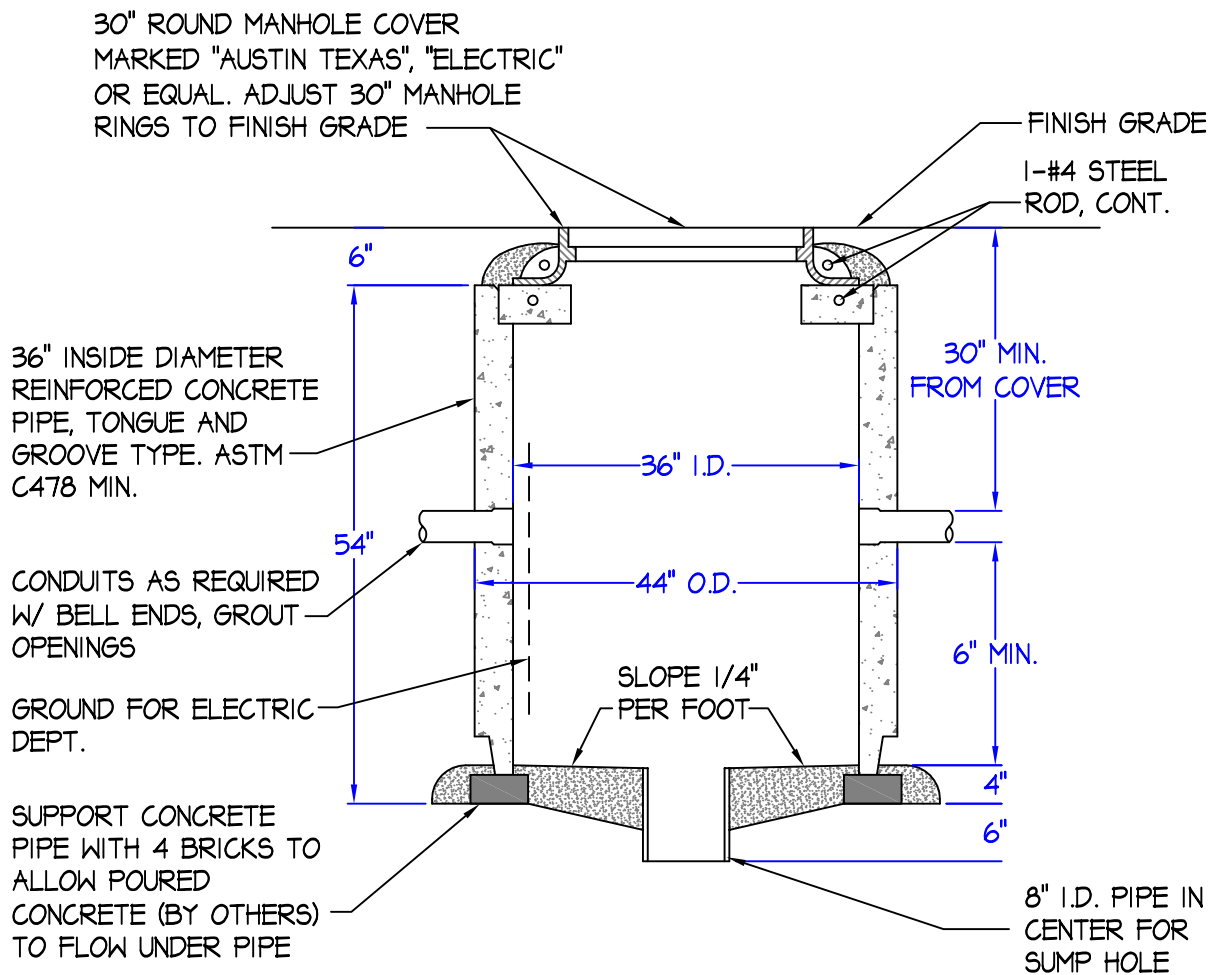


# 36" PULLBOX-TRAFFIC TYPE - CITY OF AUSTIN

NOT TO SCALE: ALL DIMENSIONS ARE SUBJECT TO ALLOWABLE SPECIFICATION TOLERANCES

**MATERIALS & FEATURES**  
 CONCRETE: CLASS "A", 5,000 PSI.  
 36" PULLBOX WEIGHT: 2,360 LBS.



SECTION VIEW

**CAPITAL CONCRETE PRODUCTS, INC.**  
 5264 HIGHWAY 71 EAST  
 DEL VALLE, TEXAS 78617  
 PHN: (512) 247-4193  
 FAX: (512) 247-4163

TITLE:	36" PULLBOX-TRAFFIC TYPE - AUSTIN
FILE NAME:	CAPITAL CONCRETE/36 PULLBOX TRA.DWG
DRAWN BY:	SUSAN MENTA
DATE:	DECEMBER 04, 2008